

IDP Entry-Fit™ Steel Door Frames

Installation Instructions

Sidelites



INTERNATIONAL DOOR PRODUCTS

**IDP Inc
21300 W. 8 Mile Rd.
Southfield, MI 48075
248-352-0044
www.idpframes.com**

Rough Opening

(Figure 1)

Step 1

Verify that the opening is plumb, square and level. To determine rough opening, add width of door to width of glass insert and add 3" for rough opening width.

(Example: $36" + 2"$ [mullion]

$+ 18" + 1 \frac{1}{4}" = 57"$ W.

Step 2

Add $\frac{1}{2}"$ to net height of frame for rough opening height. (Example: $80" + \frac{1}{2}" = 80 \frac{1}{2}"$ H)

Installation of Sill

(Figure 1)

Step 1

For installation of a sidelite unit; a sill is required. It should be a standard 2 x cut to the net wall thickness or provided steel anchor.

(Example: sidelite width 18"; Length of sill: 18")

Step 3

Install sill on floor next to stud on glass jamb side.

Mullion Clip Installation

Step 1

Select frame members that will receive mullion brackets (head on elevation shown). Determine center line of mullion and scribe a line across the rabbets. (Figure 3)

Important: All measurements should be made from the same end of the frame sections in the installed position.

Step 2

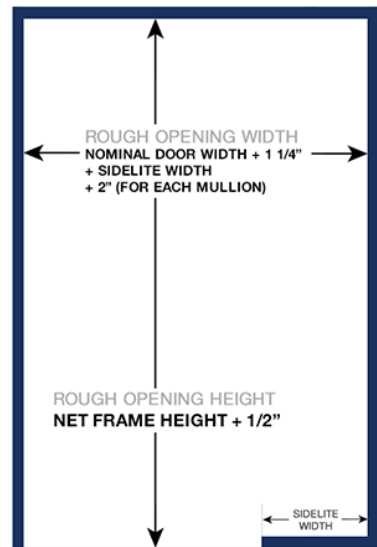
Position mullion bracket so scribe line centers in diamond window and the straight tab rests firmly against the stop on Both rabbets.

(Figure 4)

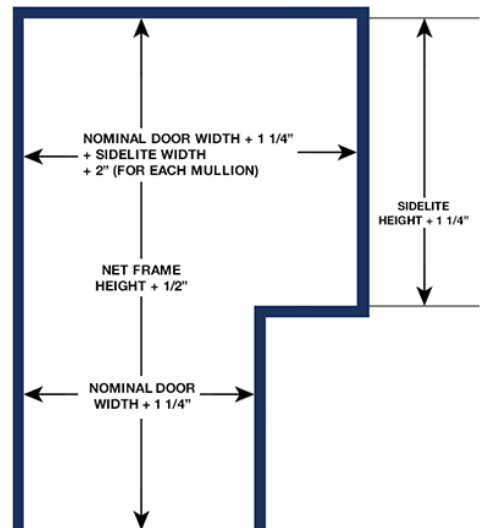
Step 3

Install screws as shown

(Figure 5)



STANDARD SIDELITE
ROUGH OPENING



PARTIAL SIDELITE
ROUGH OPENING

FIGURE 1

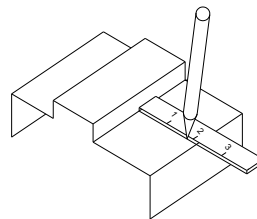


FIGURE 3

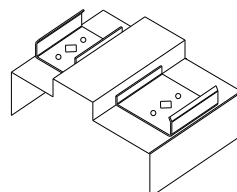


FIGURE 4

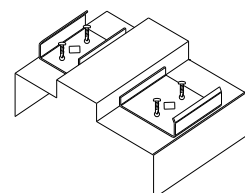


FIGURE 5

Installation of Frame

Step 1

Sleeve top header over wall
(Figure 4).

Step 2

Sleeve bottom header over sill.

Step 3

Sleeve upright members over wall
(Figure 5).

Step 4

Position mullion post on sill.
(Figure 6)

Step 5

Bring top header down to upright sections, locking them together with alignment tabs and fitting mullion brackets into the mullion post

Step 6

With a self-drilling screw, attach mullion to mullion clip and sill on both sides. (Figure 6)

Step 7

Hang door and align for squareness.

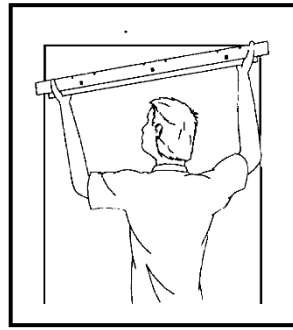


FIGURE 4

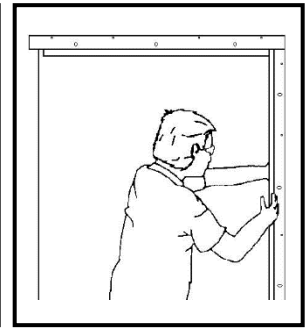


FIGURE 5

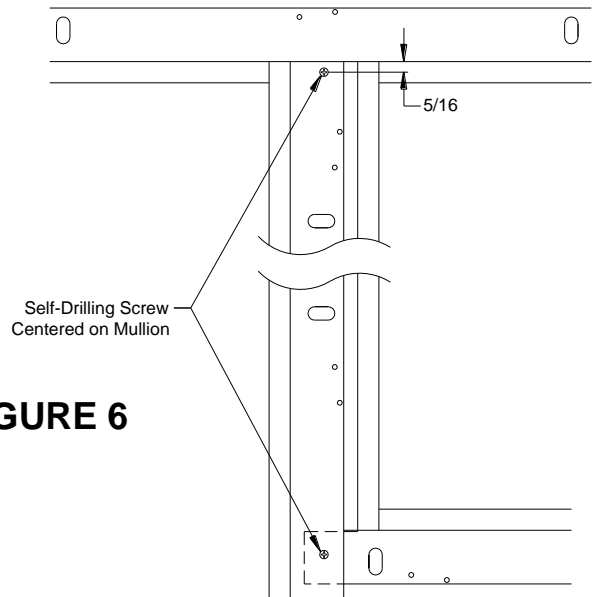
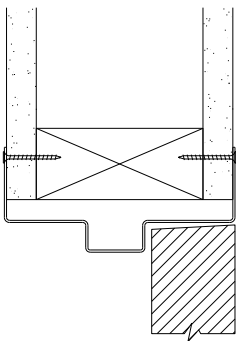


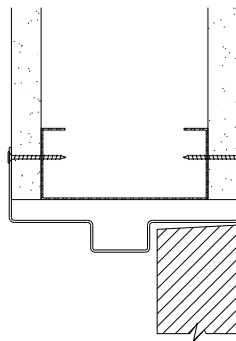
FIGURE 6

Fastening Instructions

(Figure 7)



Wall Construction
Wood Studs & Drywall
Recommended Fasteners:
1-1/4" (min.)
Drywall screws
Course thread
or
6d common nails



Wall Construction
Metal Studs & Drywall
Recommended Fasteners:
1-1/4" (min.) Type
"S" Bugle Head Self-
Tapping Screws

FIGURE 7

Fasten unit to wall as follows (Figure 11):

Step 1

To secure header, fasten header above hinge upright and proceed toward strike side. Apply one (1) fastener per nail / screw hole.

(Figure 12)

Step 2

To secure sill, apply one fastener per nail /screw hole.

Step 3

To secure hinge upright, proceed downward from upper end of hinge upright. Apply one (1) fastener per nail / screw hole (Figure 12).

Step 4

To secure upright (glass), proceed downward from upper end of glass upright. Apply one fastener per nail / screw hole.

Step 5

Install glass, glazing and glass stop

Step 6

Install casing by following the Spring Clip Snap-On Casing Installation Instructions or by the Post-Install Snap-On Casing Installation Instructions.

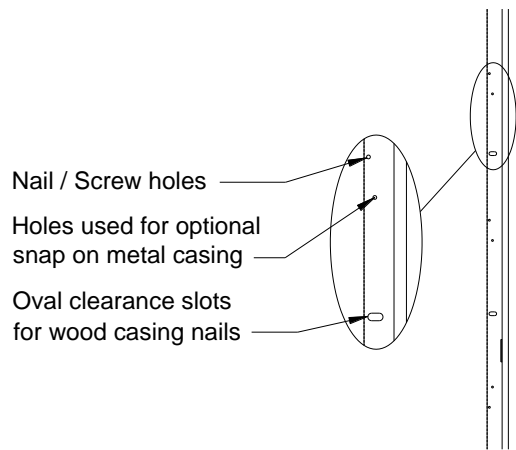


FIGURE 12