

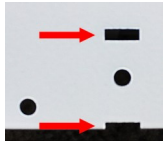
SNAP-ON CASING INSTALLATION INSTRUCTIONS



CASING CLIPS MUST BE INSTALLED PRIOR TO INSTALLATION OF THE FRAME INTO THE WALL

Please Note:

The faces of the frame have been prepped with small rectangular slots to accept the casing clips.



Snap-on Casing Kit Contents for Each Side

- A. Jamb Casing (2ct.)
- B. Header Casing (1ct.)
- C. Corner Brackets (2ct.)
- D. Casing Retainer Clip (15ct.)

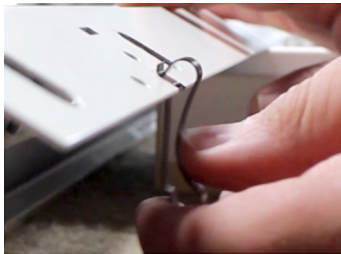


C



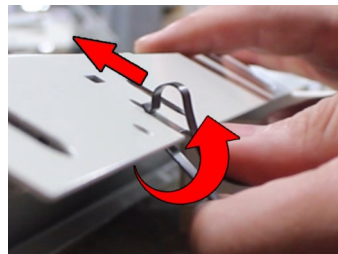
D

Step 1. Attach Clips to Frame



Start by hanging the Casing Retainer Clip (D) at 90 degrees to the edge of the frame face.

The clip needs to be aligned with the slot in the edge of the frame face.



Pivot Casing Retainer Clip (D) upward and slide toward inner slot until lead end drops into slot.



⚠ Make sure lead end is engaged in the inner slot or bottom retainer flange may snap in prematurely allowing for incorrect installation.



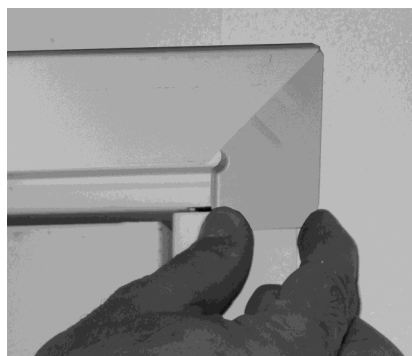
Push Casing Retainer Clip (D) completely forward to engage the U-shaped retainer fully forward.

The clip is now in place and ready to accept the casing after the frame has been installed into the wall.



Step 2.

Position header casing over top edge of clips and center over door opening. Tap casing toward door near each clip to snap it over the clips.



Step 3.

Insert Corner Bracket (C) into header.



Step 4.

Slide jamb casing over corner bracket. Push casing upward to meet miter on header casing. Adjust header casing and jamb casing to obtain a tight miter joint. Position casing over outside edge of clips and tap casing toward inside of frame near each clip to snap it over clips. Repeat for other jamb.